

Tool storage system WAS 100

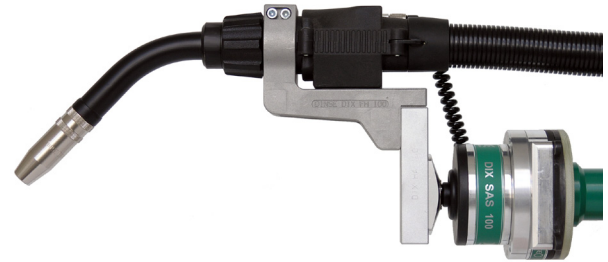
For robotic and automatic applications MIG/MAG, TIG

Technical data:

Tool storage system	WAS 100
Fixture mandrel	WAS KD 3100
Tool holder	WAS WT 3200
Storage station	WAS WS 3300
SAS - flange	WAS FL 100
Adapterflansch (bore pattern dependent of robot type)	61-3-2xxx
Dimension (D/H):	ø 3.937" / .177" (100 / 4.5 mm)



Storage station with fixture mandrel, tool holder and SAS - flange



Torch system with fixture mandrel, tool holder and SAS - flange mounted



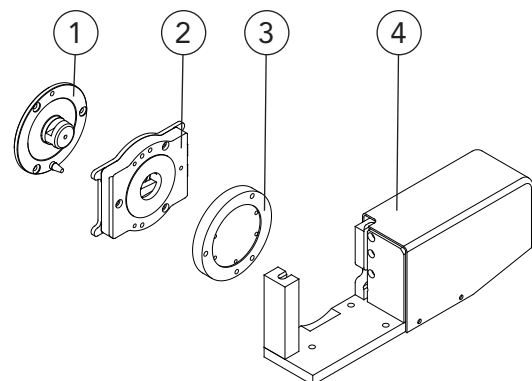
Torch system in the storage station uncoupled from robot

Properties

- High flexibility and guaranteed system availability through quick tool change with storage station
- Tool position can be reproduced on the robot through positive interlocking
- Pneumatic clamping system independent of robot
- Monitoring the tool storage via reed contact
- Auto-clamping by springs during power failure
- **Options:** Tool identification in the storage station

Application

- For all common tools
- Replacement of wearing parts without stopping production
- For changing production processes



Description	Part name	Part number
1 Fixture mandrel	DIX WAS KD 3100	683403100
2 Tool holder	DIX WAS WT 3200	683403200
3 SAS - flange	DIX WAS FL 100	683403310
4 Storage station	DIX WAS WS 3300	683403300

- Variants deviating of the standard fittings on request.
The appropriate adapter flanges you will find in chapter tools and accessories.