



DINSE

DIX MBTZ 54xx



- ▶ Premium quality DINSE torch head on your ABICOR BINZEL* torch set
- ▶ Consistent and reliable TCP
- ▶ Highly effective DINSE dual-circuit cooling
- ▶ Convincing performance

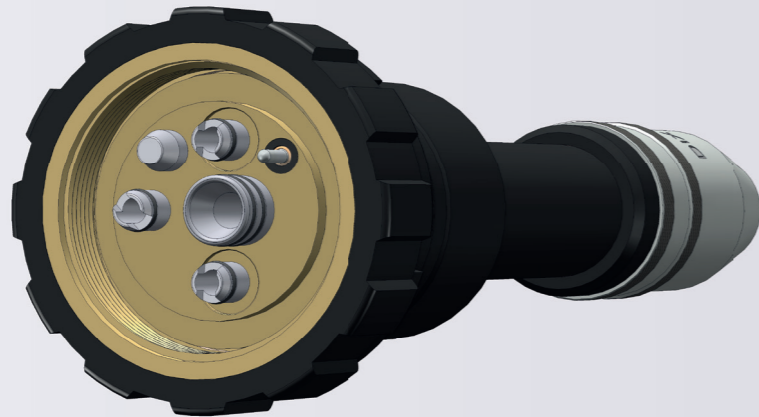
**The products listed below and above in this flyer are manufactured by DINSE GmbH. These are accessories and spare parts intended for use with ABICOR BINZEL products. The mention of ABICOR BINZEL serves solely as a compatibility reference and there is no connection to the company. Any trademark rights are held solely by ABICOR BINZEL.*



GUARANTEED EASY UPGRADE OF YOUR SYSTEM

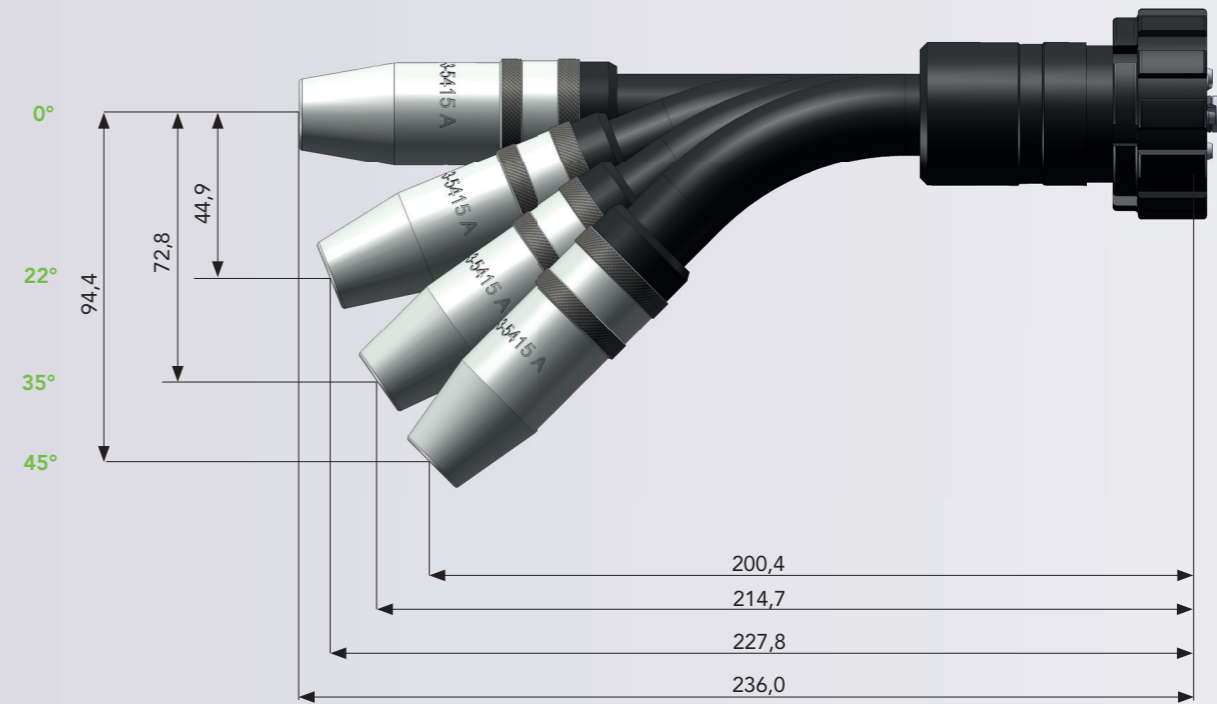
Now you can use all the benefits of DINSE quality welding torches with welding equipment from ABICOR BINZEL*, too. The torch heads can be easily and conveniently connected to your existing automatic welding equipment. Changing them takes no time at all:

The high-quality workmanship of our gun heads ensures long and economical use. The various components are individually replaceable. The modular design allows for enormous flexibility in application.



DIX MBTZ 5400/5422/5435/5445

- ▶ Unalloyed and low-alloy steels / high-alloy steels
- ▶ Aluminium, copper, magnesium and nickel-based alloys
- ▶ Medium and large material thicknesses

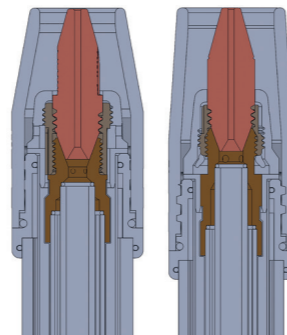


MAXIMAL COOLING PERFORMANCE - MINIMAL WEAR

With DINSE dual-circuit liquid cooling, the cooling medium flows through the entire length of the welding gun in ring-shaped channels. This cools the contact tip and gas nozzle in parallel and therefore particularly efficiently – for optimum temperature reduction.

The result is increased performance and a longer service life for the welding torch.

Heat transfer begins directly beneath the gas nozzle or contact tip. This reduces the thermal load on the entire system of wear parts.



Performance data DIN EN 60 974-7

DIX MBTZ 5400	450A/100% ED C1	400A/100% ED M21
DIX MBTZ 5422	450A/100% ED C1	400A/100% ED M21
DIX MBTZ 5435	450A/100% ED C1	400A/100% ED M21
DIX MBTZ 5445	450A/100% ED C1	400A/100% ED M21

*The products listed below and above in this flyer are manufactured by DINSE GmbH. These are accessories and spare parts intended for use with ABICOR BINZEL products. The mention of ABICOR BINZEL serves solely as a compatibility reference and there is no connection to the company. Any trademark rights are held solely by ABICOR BINZEL.

TECHNICAL DATA

Description	Dimension	Part name	Part number
Gas nozzle	ID ø 13 mm	DIX 1-3-5413 A	6390154130
Gas nozzle	ID ø 15 mm	DIX 1-3-5415 A	6390154150
Gas nozzle	ID ø 18 mm	DIX 1-3-5418 A	6390154180
Insulator		DIX 2-3-500	6390250000
Contact tip	ø 8 x 45 mm	DIX 3-2-__ SR	6290354__
Contact tip	M6 x 24 mm	DIX 3-2-__	6290300__
Contact tip	M6 x 28 mm	DIX 3-2-__ CR-ZR	6290330__
Contact tip	M8 x 28 mm	DIX 3-2-__ M8	6290301__
Contact tip	M8 x 28 mm	DIX 3-2-__ M8 CR-ZR	6290331__
Tip adapter	M6	DIX GS 2 M6	628150006
Clamp nut		DIX 4-2-MAS	6390454000
Tip adapter	M8	DIX GS 2 M8	628150008
Gas diffusor		DIX 10-3-540	6391054000
O - ring	(unit 10 pcs.)		639060003
Torch neck	0°	DIX 6-3-5400 MBTZ	639068000
Torch neck	22°	DIX 6-3-5422 MBTZ	639068001
Torch neck	35°	DIX 6-3-5435 MBTZ	639068002
Torch neck	45°	DIX 6-3-5445 MBTZ	639068003
Rubber cover		DIX GT 5400 MBTZ	639068029
Protective cap		DIX 6-3-5400 MBTZ	639068011

Description	Dimension	Part name	Part number
Torch head	0°	DIX MBTZ 5400	631315400
Torch head	22°	DIX MBTZ 5422	631315420
Torch head	35°	DIX MBTZ 5435	631315435
Torch head	45°	DIX MBTZ 5445	631315440

Your DINSE Partner:



DINSE is your reliable partner for flawless welding processes.
Contact us to arrange a consultation appointment.
We will work with you to develop the optimal solution for your application.



+49-(0)40-65875-0



info@dinse.eu

DINSE G.m.b.H. · Niewisch 9 · D-22848 Norderstedt · www.dinse.eu